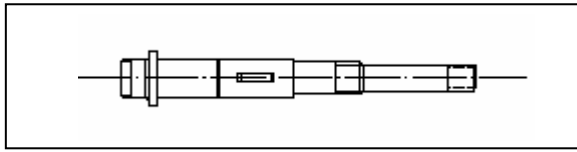


Spindeln und Hülsen für BECHLER Maschinen

Broches et douilles pour machines BECHLER

Spindles and collets for BECHLER machines



Hauptspindel / Broche de la poupée / Main spindle AR-7/10

Standard Spindel

Broche standard

Standard spindle

Ident: [830842](#)

Standard Arretierspindel

Broche arrêtage standard

standard stopping spindle

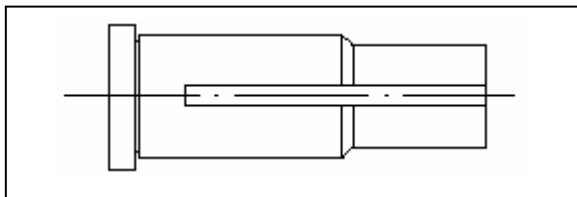
Ident: [829132](#)

Arretierspindel mit Indexierung

Broche arrêtage avec indexage

Locking spindle with indexation

Ident: [835702](#)



Spannhülse / Douille de serrage / Collet sleeve AR-7/10

Hülse A-7 Arbeit mit Führungsbüchse

Douille A-7 travail en canon

Sleeve A-7 work with guide bush

Ident: [818433](#)

Hülse A-7 Arbeit ohne Führungsbüchse

Douille A-7 travail sans canon

Sleeve A-7 work without guide bush

Ident: [816563](#)

Hülse A-10 Arbeit mit Führungsbüchse

Douille A-10 travail en canon

Sleeve A-10 work with guide bush

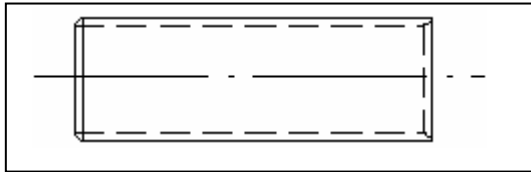
Ident: [810837](#)

Hülse A-10 Arbeit ohne Führungsbüchse

Douille A-10 travail sans canon

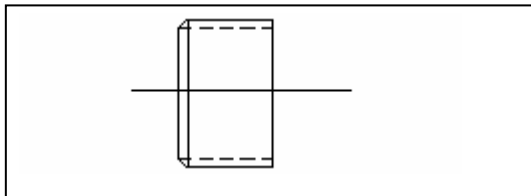
Sleeve A-10 work without guide bush

Ident: [815948](#)



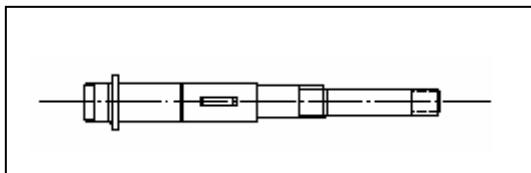
Zwischenhülse AR-10
Douille intermédiaire AR-10
Intermediate sleeve AR-10

Ident: [830845](#)



Stützgelenk (Kalotte) AR-10
Talon de la douille AR-10
Support link AR-10

Ident: [817443](#)



Hauptspindel / Broche de la poupée / Main spindle BR-16/20

Standard Spindel
Broche standard
Standard spindle

Ident: [832740](#)

Spindel mit kurze Nase
Broche à nez court
Spindle with short nose

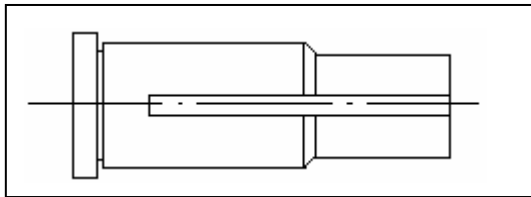
Ident: [831640](#)

Standard Arretierspindel
Broche arrêtage standard
Standard locking spindle

Ident: [836528](#)

Arretierspindel kurze Nase
Broche arrêtage nez court
Locking spindle short nose

Ident: [833830](#)



Spannhülse / Douille de serrage / Collet sleeve BR-16/20

Hülse Arbeit mit standard Führungsbüchse

Douille travail en canon standard

Ident: 821617

Sleeve work with standard guide bush

Hülse Arbeit ohne standard Führungsbüchse

Douille travail sans canon standard

Ident: 810020

Sleeve work without standard guide bush

Hülse Arbeit mit Führungsbüchse kurze Nase

Douille travail en canon nez court

Ident: 833358

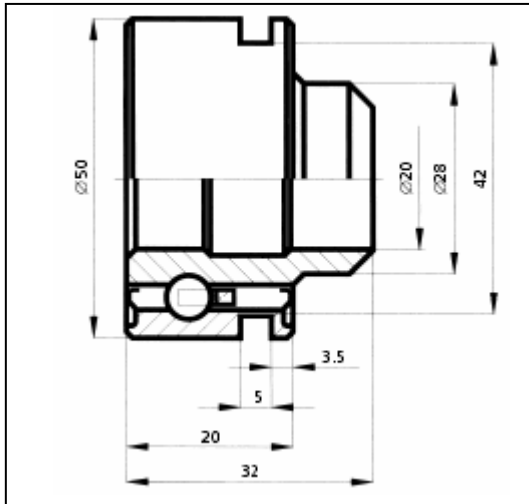
Sleeve work with guide bush short nose

Muffen für TORNOS

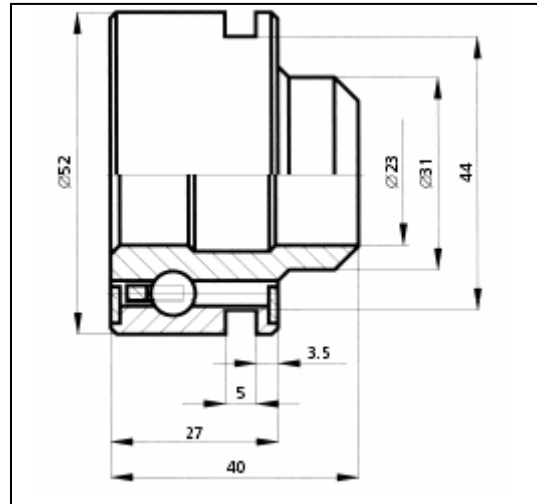
Bobines de serrage TORNOS

Gripping bobbins for TORNOS

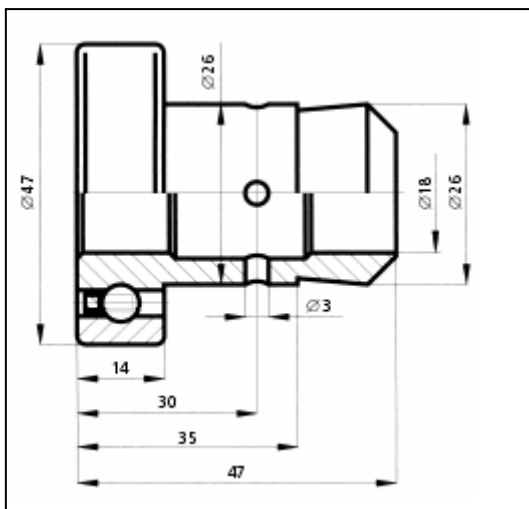
Maschine M4 / T4



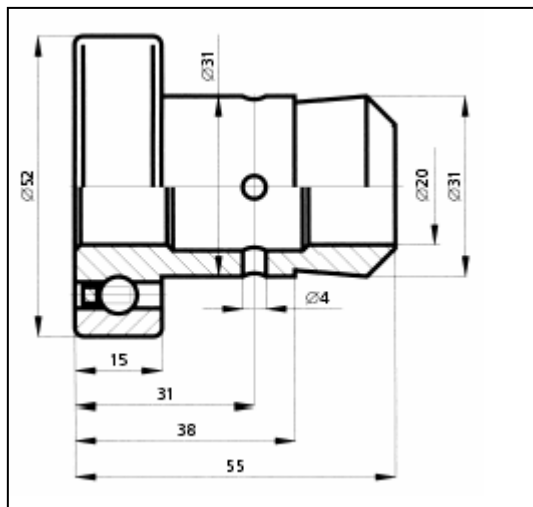
Tornos T-4 & TV-4
Ident: [115055](#)



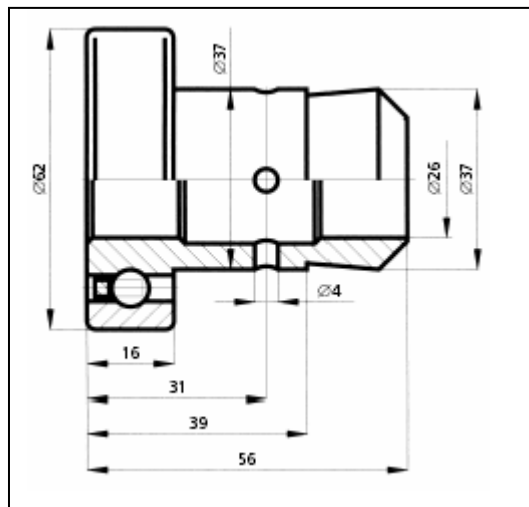
Tornos M-4 $\varnothing 23$
Ident: [115048](#)



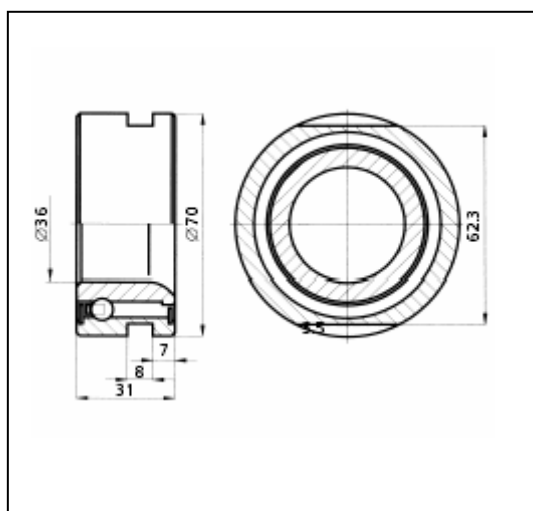
Tornos M-4 $\varnothing 18$
Ident: [115040](#)



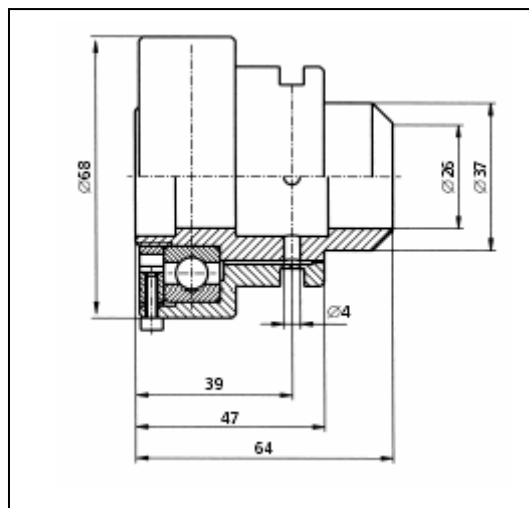
Tornos M7 Ø20
Ident: 115020



Tornos M7 Ø26
Ident: 115032

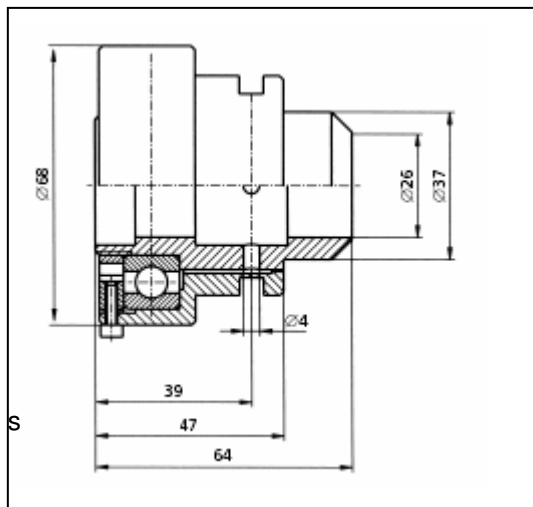


Tornos M7 & MS7
Stopp / à arrêtage / Stopp
Tornos R10
Ident: 115075



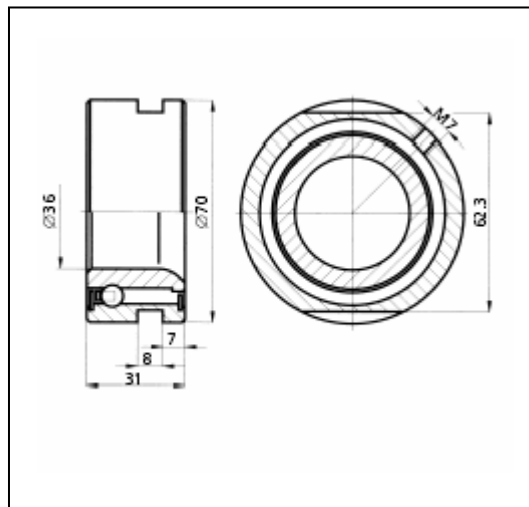
Tornos M7 & MS7
dauer geschmiert / prégraissé / prelubricated
Ident: 115234

Maschine MS7



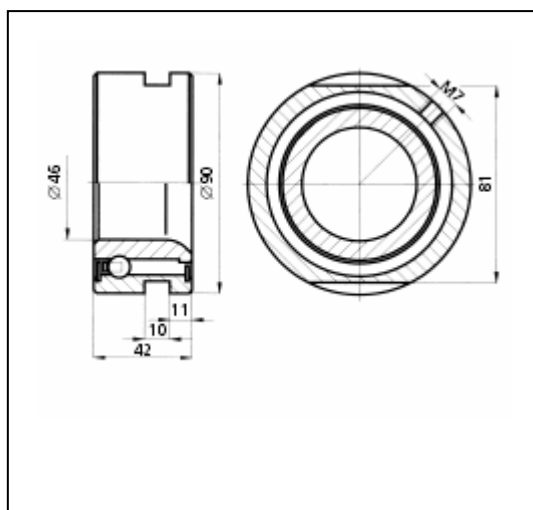
Tornos MS7
Mit Öler / avec huileur / with oiler

Ident: 115210

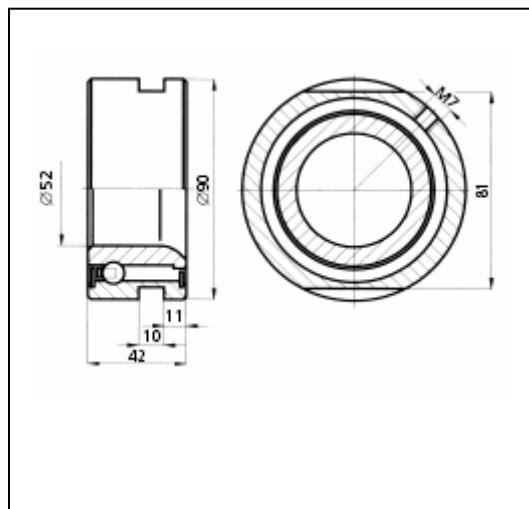


Tornos MS7
Stopp / à arrêtage / Stopp
Mit Öler / avec huileur / with oiler
Ident: 115019

Maschine R16 / RR-20

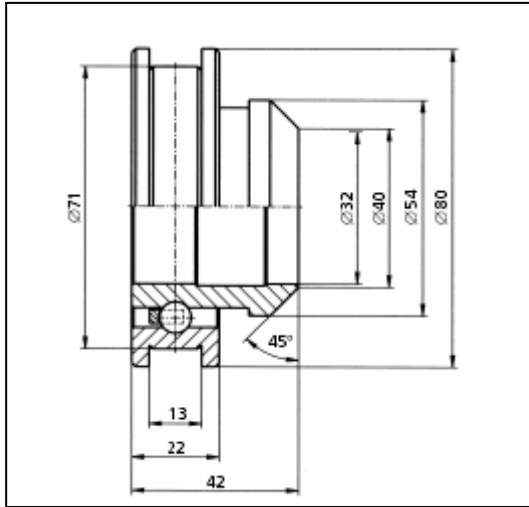


Tornos R16
Mit Öler / avec huileur / with oiler
Ident: 115028

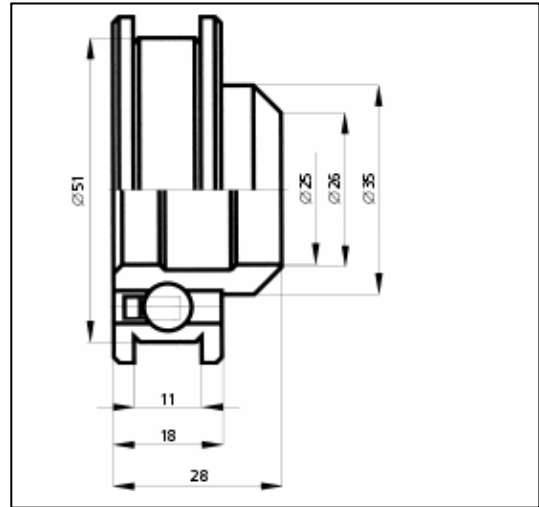


Tornos R20 & RR-20
Mit Öler / avec huileur / with oiler
Ident: 115023

Maschine Bechler



Bechler BR-16 & BR-20
Ident: [820512](#)



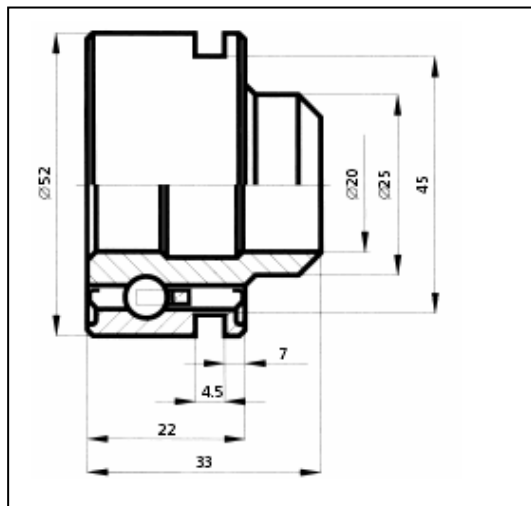
Bechler AS-7 & AR-10
Ident: [817346](#)

Muffen für PETERMANN

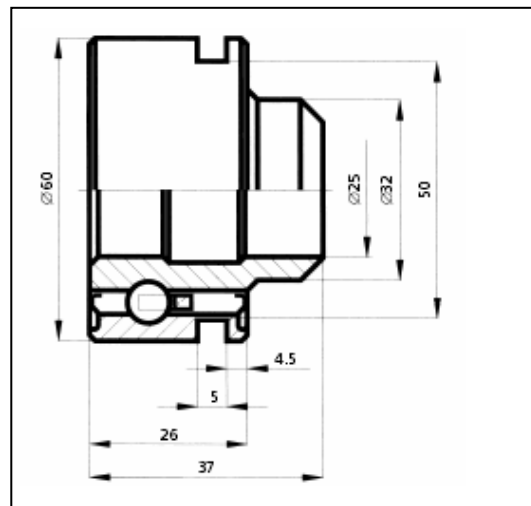
Bobines de serrage PETERMANN

Gripping bobbins for PETERMANN

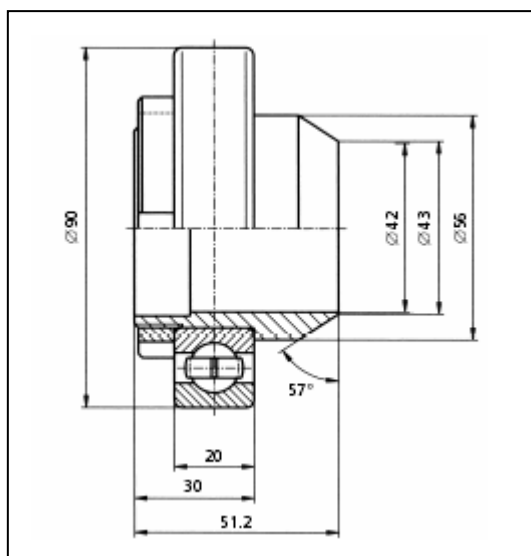
Maschine PETERMANN



Petermann P-4
Ident: [507.026](#)

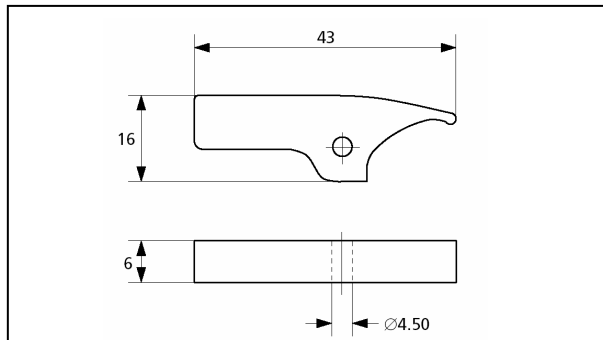


Petermann P-7 R
Ident: [508447](#)

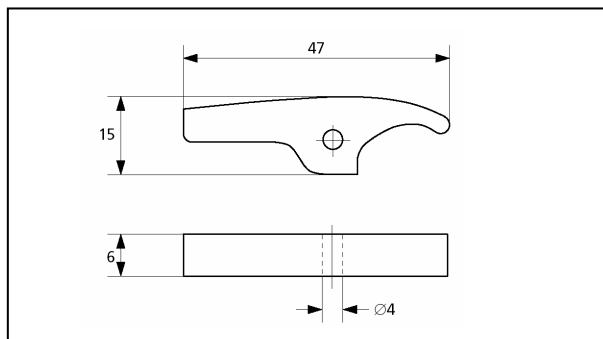


Petermann P-16-R
Mutter / ecrou / nut: [500.445](#)
Spannmuffe / bobine / bobbin: [504.418](#)
Kugellager / roulement / bearing: [203.702](#)

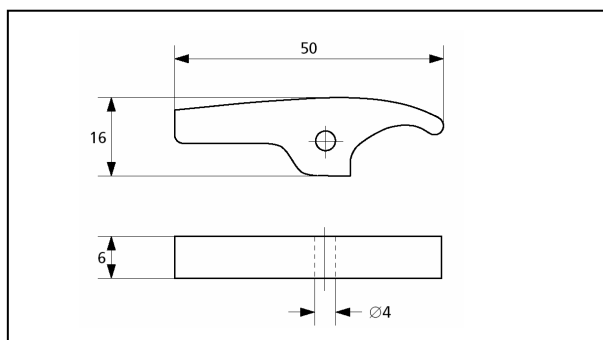
Spannkaggen für TORNOS Chiens de serrage TORNOS Toggles for TORNOS



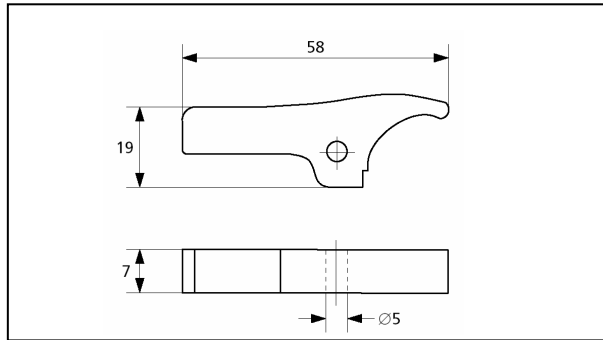
Maschine TVT4	
TV45	Ident: 19509



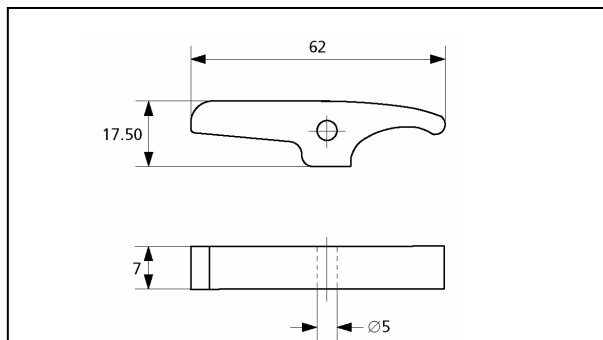
Maschine M4	
MF433	Ident: 14138



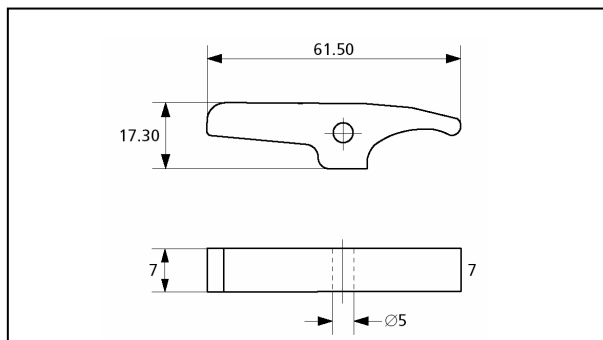
MF7817	Ident: 14928
--------	--------------



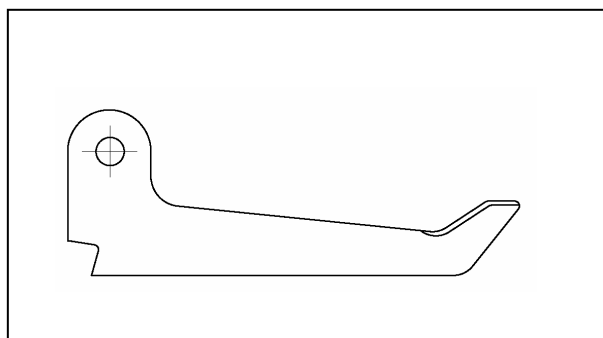
Maschine M7	
MD265	Ident: 12949



MD9705	Ident: 13397
--------	--------------

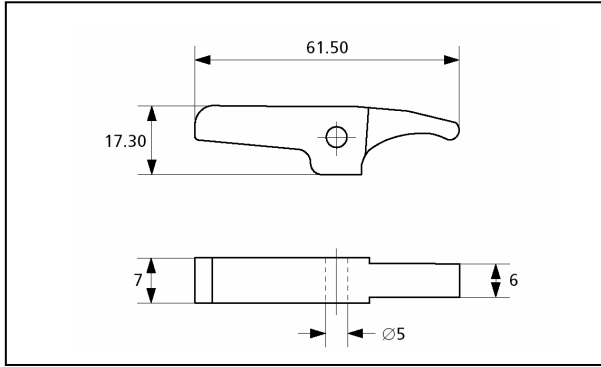


MD14103	Ident: 30393
---------	--------------

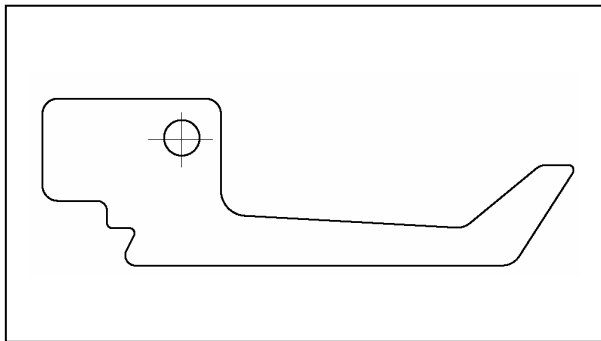


MD15355	Ident: 13668
---------	--------------

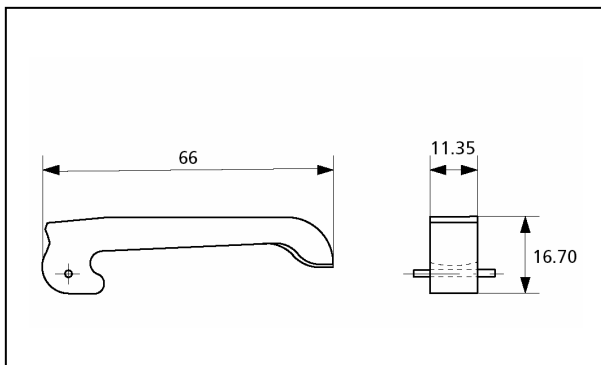
(3 Spannknaggen)
 (3 chiens)
 (3 toggles)



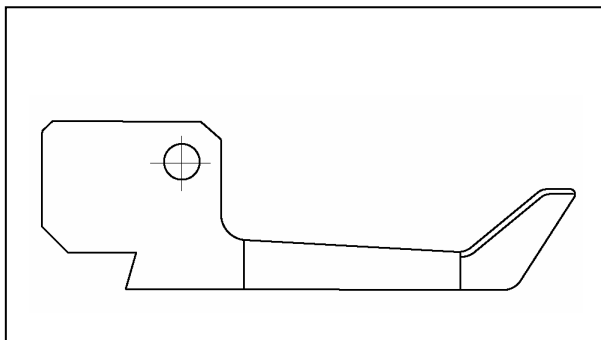
Maschine MS7	
MD14103-01	Ident: 30393



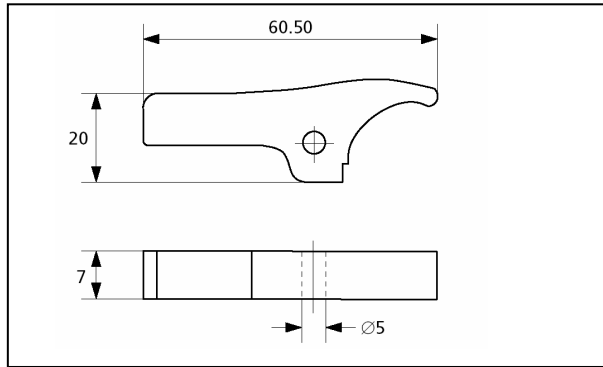
MD15825	Ident: 32161
---------	--------------



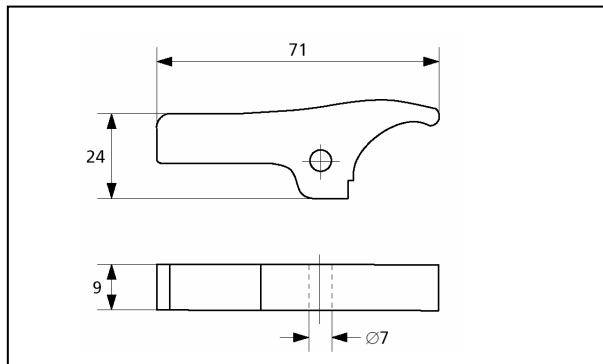
Maschine R10	
RA-87	Ident: 15626



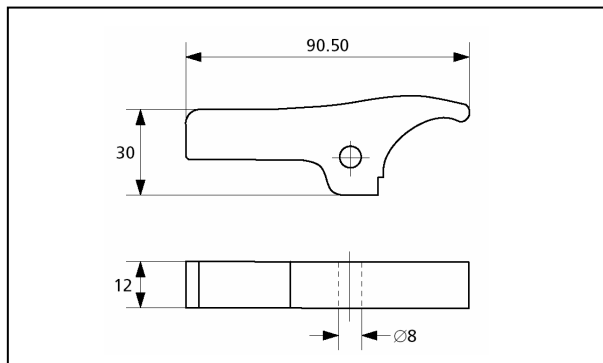
MD15825	Ident: 43362
---------	--------------



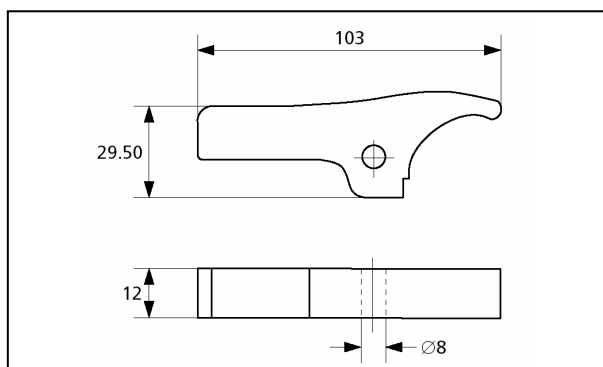
Maschine M-10	
MA-6469	Ident: 6165



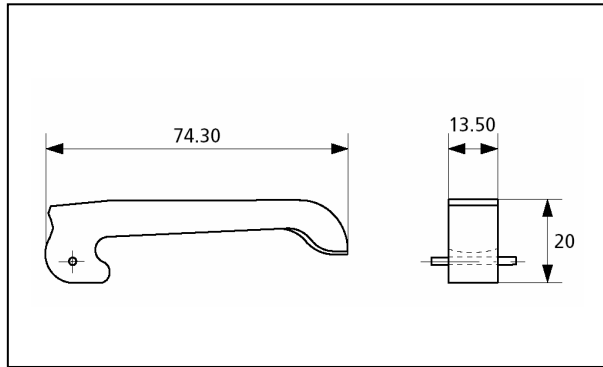
Maschine M-15	
B-451	Ident: 11437



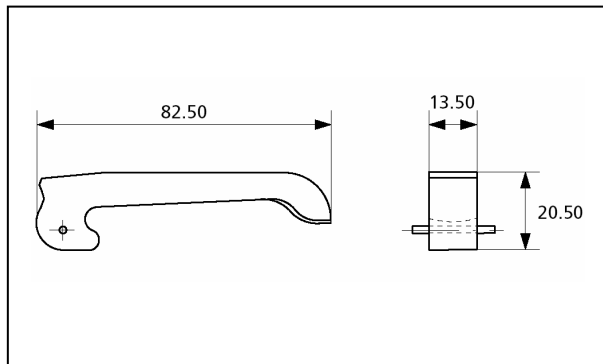
Maschine M-20	
J-51	Ident: 11906



Maschine M-25 / M-28	
C-157	Ident: 11512



Maschine R16	
RB-5031	Ident: 17383

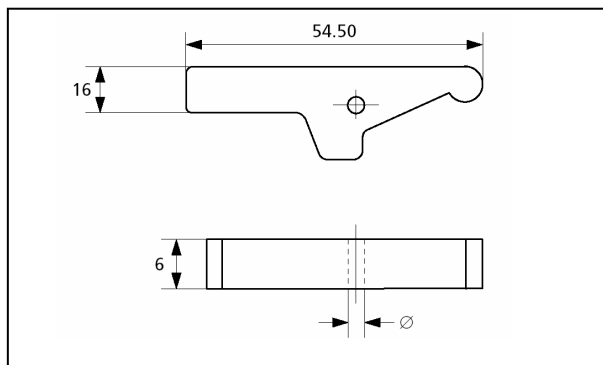


Maschine RR-20	
RB-5105	Ident: 8872

Spannknaggen für BECHLER

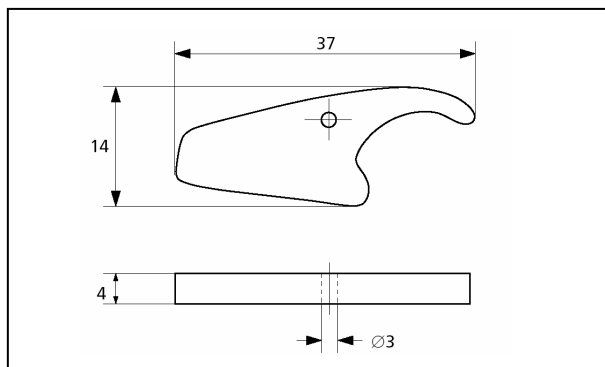
Chiens de serrage BECHLER

Toggles for BECHLER

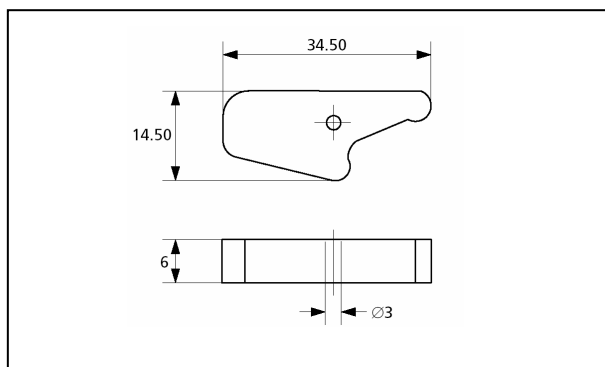


Maschine AS7-AR10	
S3007a (Ø = 3.00)	Ident: 466889
S3007 (Ø = 4.00)	Ident: 464023

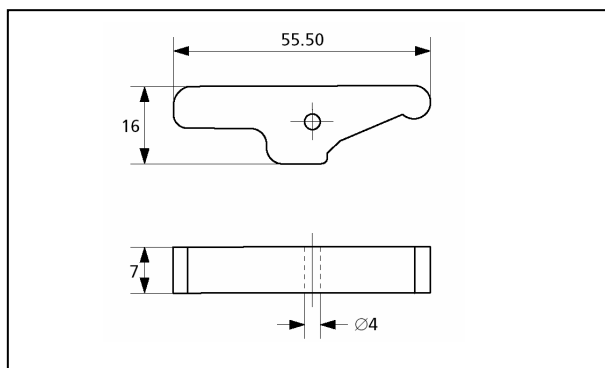
Spannkraggen für PETERMANN
 Chiens de serrage PETERMANN
 Toggles for PETERMANN



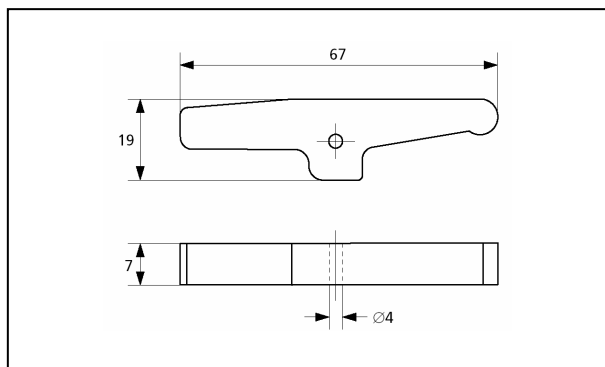
Petermann P-3	
CHSE P3	Ident: <u>507311</u>



Petermann P-4	
CHSE P4	Ident: <u>507312</u>



Petermann P-7	
CHSE P7	Ident: <u>507314</u>

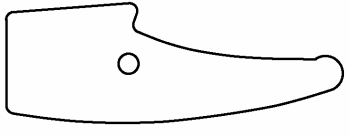


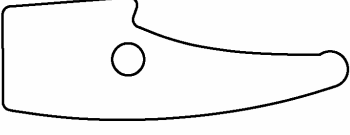
Petermann P-7R	
CHSE P7R	Ident: <u>507317</u>

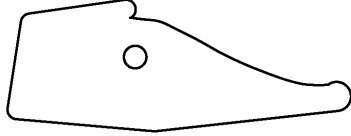
Spannkraggen für CITIZEN

Chiens de serrage CITIZEN

Toggles for CITIZEN

Maschinen Typ Type de machine Machine type	Bestellnummer No de commande Order Nr	Länge Longueur Length	Breite Largeur Thickness	Bohrung Alésage Bore	
L16 - L20	<u>10.1001</u>	55	6	4	

Maschinen Typ Type de machine Machine type	Bestellnummer No de commande Order Nr	Länge Longueur Length	Breite Largeur Thickness	Bohrung Alésage Bore	
L16 E	<u>10.1002</u>	73	10	8	

Maschinen Typ Type de machine Machine type	Bestellnummer No de commande Order Nr	Länge Longueur Length	Breite Largeur Thickness	Bohrung Alésage Bore	
B12	<u>10.1005</u>	55.5	8	6	

Hauptspindel

Broche principale

Main Spindle

Maschinen Typ Type de machine Machine type	Bestellnummer No de commande Order Nr	Länge Longueur Length	Breite Largeur Thickness	Bohrung Alésage Bore	
B12	<u>10.1006</u>	36	4	4	

Abgreifspindel

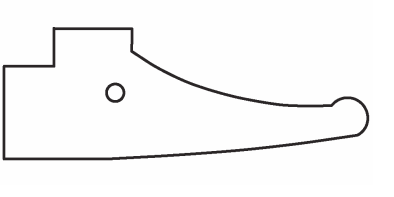
Contre-broche

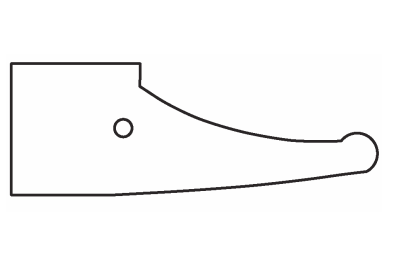
Counter spindle (pick-up spindle)

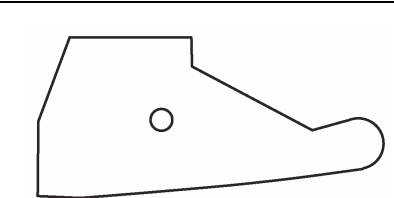
Spannkraggen für STAR

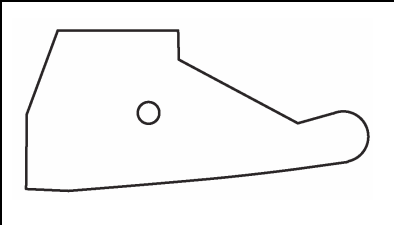
Chiens de serrage STAR

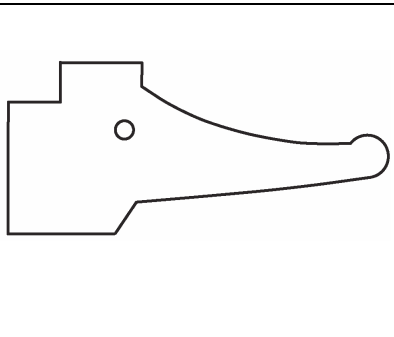
Toggles for STAR

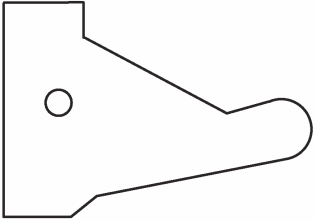
Maschinen Typ Type de machine Machine type	Bestellnummer No de commande Order Nr	Länge Longueur Length	Breite Largeur Thickness	Bohrung Alésage Bore	
JNC 16 H-Sp	<u>102601-1</u>	72.5	10	6	
SNC 15	<u>102601-2</u>				


Maschinen Typ Type de machine Machine type	Bestellnummer No de commande Order Nr	Länge Longueur Length	Breite Largeur Thickness	Bohrung Alésage Bore	
JNC 25 * 32	<u>102602-1</u>	69	14	8	
VNC 32	<u>102602-2</u>				
KNC 25/32	<u>102602-3</u>				
KNC 25/32 II	<u>102602-4</u>				

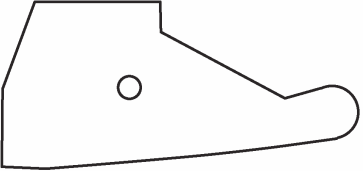
Maschinen Typ Type de machine Machine type	Bestellnummer No de commande Order Nr	Länge Longueur Length	Breite Largeur Thickness	Bohrung Alésage Bore	
KNC 16/20 B-Sp	<u>102606-1</u>	50	12	8	
SR / 20 B-Sp	<u>102606-2</u>				

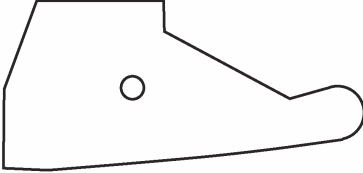
Maschinen Typ Type de machine Machine type	Bestellnummer No de commande Order Nr	Länge Longueur Length	Breite Largeur Thickness	Bohrung Alésage Bore	
KNC 25/32 B-Sp	<u>102608-1</u>	50	12	8	
KNC 25/32 II B-Sp	<u>102608-2</u>				

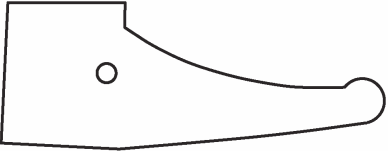
Maschinen Typ Type de machine Machine type	Bestellnummer No de commande Order Nr	Länge Longueur Length	Breite Largeur Thickness	Bohrung Alésage Bore	
RNC 16	<u>102609-1</u>	68	10	6	
KJR 16	<u>102609-2</u>				
SST 16	<u>102609-3</u>				
SR 16	<u>102609-4</u>				
SH/SE 16	<u>102609-5</u>				
SA 16	<u>102609-6</u>				

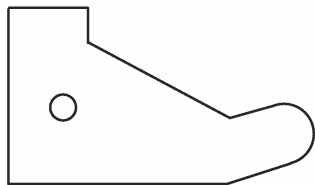
Maschinen Typ Type de machine Machine type	Bestellnummer No de commande Order Nr	Länge Longueur Length	Breite Largeur Thickness	Bohrung Alésage Bore	
RNC 16 B-Sp	<u>102610-1</u>	32.5	6	5	
VNC 12 B-Sp	<u>102610-2</u>				

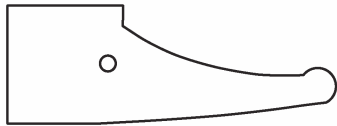
Type de machine Maschinen Typ Machine type	No de commande Bestellnummer Order Nr	Longueur Länge Length	Largeur Breite Thickness	Alésage Bohrung Bore	
SNC 25	<u>102611</u>	85	14	8	

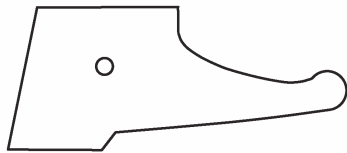
Type de machine Maschinen Typ Machine type	No de commande Bestellnummer Order Nr	Longueur Länge Length	Largeur Breite Thickness	Alésage Bohrung Bore	
SST 16 B-Sp	<u>102612</u>	39	8	6	

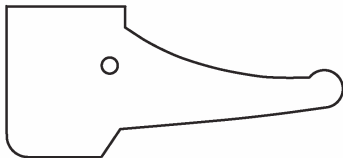
Type de machine Maschinen Typ Machine type	No de commande Bestellnummer Order Nr	Longueur Länge Length	Largeur Breite Thickness	Alésage Bohrung Bore	
SR 16 B-Sp	<u>102613</u>	39	8	6	


Type de machine Maschinen Typ Machine type	No de commande Bestellnummer Order Nr	Longueur Länge Length	Largeur Breite Thickness	Alésage Bohrung Bore	
VNC 20	<u>102615-1</u>	77	12	8	
KNC 16/20	<u>102615-2</u>				
SR 20/32	<u>102615-3</u>				
KJR 25	<u>102615-4</u>				
KJR 25 II	<u>102615-5</u>				
KJR 25 B-Sp	<u>102615-6</u>				
KJR 25 IIB-Sp	<u>102615-7</u>				

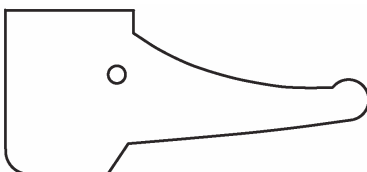
Maschinen Typ Type de machine Machine type	Bestellnummer No de commande Order Nr	Länge Longueur Length	Breite Largeur Thickness	Bohrung Alésage Bore	
VNC 20 B-Sp	<u>102616-1</u>	34.4	8	6	
KJR 16 B-Sp	<u>102616-2</u>				

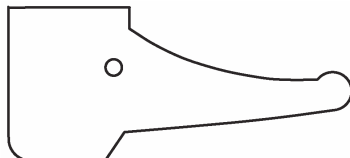
Maschinen Typ Type de machine Machine type	Bestellnummer No de commande Order Nr	Länge Longueur Length	Breite Largeur Thickness	Bohrung Alésage Bore	
SW/R	<u>102619-1</u>	56	8	6	
SW 7 /R B-Sp	<u>102619-2</u>				
SH 7	<u>102619-3</u>				

Maschinen Typ Type de machine Machine type	Bestellnummer No de commande Order Nr	Länge Longueur Length	Breite Largeur Thickness	Bohrung Alésage Bore	
SR 32 B-Sp	<u>102620-1</u>	54	12	8	
RNC SR 32 B-Sp	<u>102620-2</u>				

Maschinen Typ Type de machine Machine type	Bestellnummer No de commande Order Nr	Länge Longueur Length	Breite Largeur Thickness	Bohrung Alésage Bore	
SV 20	<u>102621</u>	78	12	8	

Maschinen Typ Type de machine Machine type	Bestellnummer No de commande Order Nr	Länge Longueur Length	Breite Largeur Thickness	Bohrung Alésage Bore	
SV 32 H-Sp	<u>102622</u>	80	12	8	

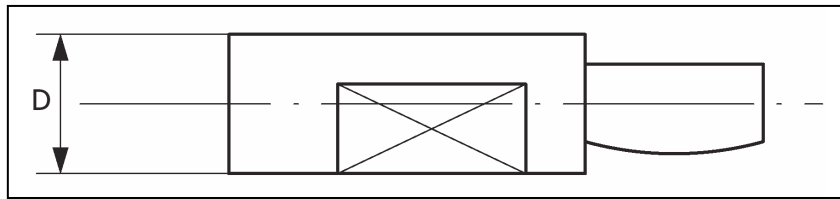
Maschinen Typ Type de machine Machine type	Bestellnummer No de commande Order Nr	Länge Longueur Length	Breite Largeur Thickness	Bohrung Alésage Bore	
SV 32 B-Sp	<u>102623</u>	62	12	8	

Maschinen Typ Type de machine Machine type	Bestellnummer No de commande Order Nr	Länge Longueur Length	Breite Largeur Thickness	Bohrung Alésage Bore	
SA 16/12	<u>102624</u>	62	12	8	

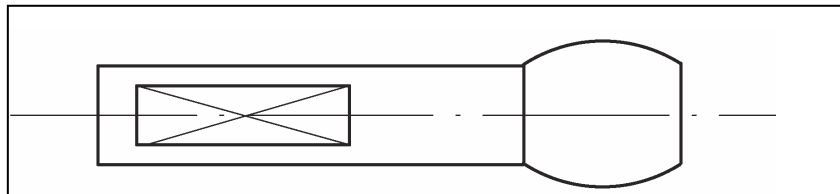
TORNOS Nocken

Becs TORNOS

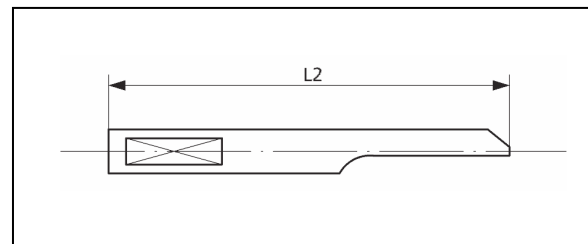
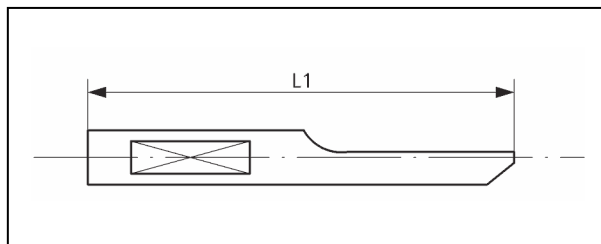
TORNOS toes



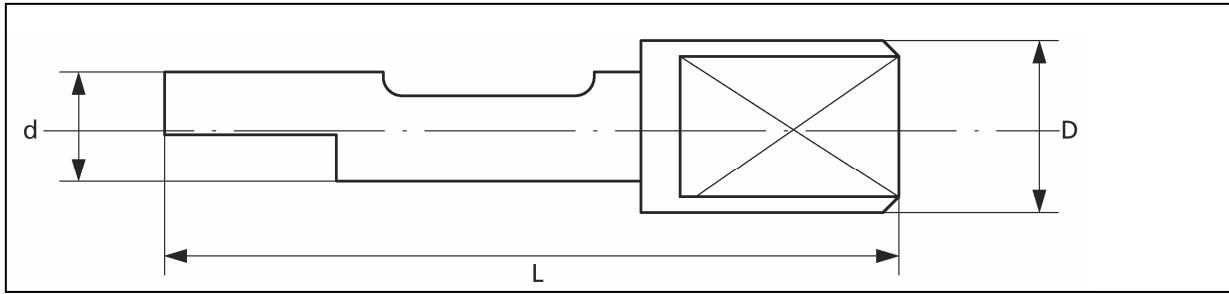
Vorschubnocken / Becs d' avance / Cam follower, spindle feed				
No Nr. Nr	Appareil Apparat Attachment	Machines Maschinen Machines	Matière Material Material	Ø D
<u>14903</u>	13-PB	M-4	2	6
<u>12180</u>	13-Y	M-7 / R-10	1	8
<u>84834</u>	13-Y	M-7 / R-10	2	8
<u>12562</u>	13-CA	R-16 / RR-20	1	10
<u>15183</u>	13-GA	MR-32	1	12



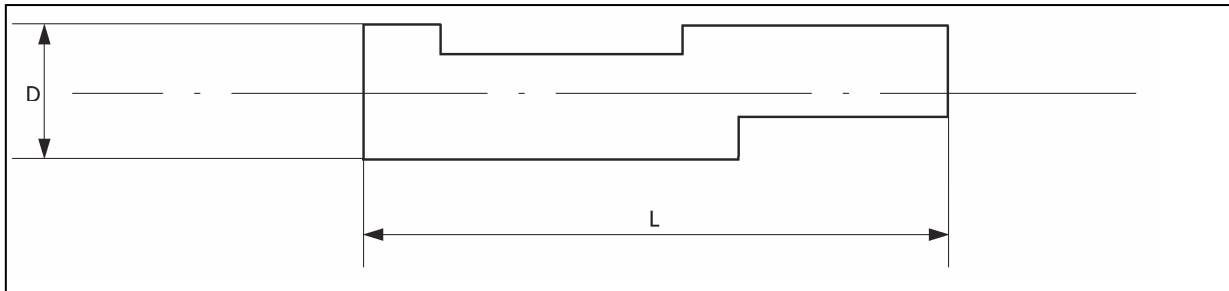
Einschaltnocken / Becs d'embrayage / Cam follower, clutch engagement	
Material Matière Material	Ident: <u>12218</u>
1	



Nocken des Klink-Hebels 13-Y / Becs du levier cliquet 13-Y / Cam follower, clutch Kickoff		
Nr. No Nr	Material Matière Material	L
<u>6110</u>	2	46
<u>6111</u>	2	55
<u>12190</u>	1	46
<u>12191</u>	1	55



Nocken für Apparat / Becs dáppareil / Beaks for attachment						
Nr. No Nr	Apparat Appareil Attachment	Maschinen Machines Machines	Material Matière Material	D D D	d d d	L L L
<u>22767</u>	34-BA	M-4	1	10	7	37
<u>16341</u>	34-DA	M7 / R-10	1	13.5	8	52.5
<u>45857</u>	34-DA	M-7 / R-10	2	13.5	8	52.5
<u>25120</u>	14-BA	R-16 / RR-20	1	15.5	10	55




Nocken für / Becs pour / Beaks for 32-AA					
Nr. No Nr	Apparat Appareil Attachment	Maschinen Machines Machines	Material Matière Material	D D D	L L L
24295	32-AA	M-7	2	7	31

Hartmetall TORNOS Nocken


Becs TORNOS métal dur

Carbide TORNOS beaks

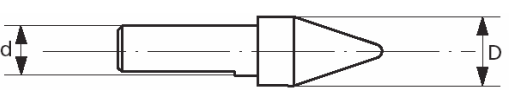
Nocken für senkrechte Werkzeuge / Becs pour outils verticaux / beaks for vertical tools		
Nr.	d	L
No	d	L
Nr	d	L
<u>10162</u>	9	42
<u>13051</u>	10	40
<u>17318</u>	12	48
<u>11558</u>	13	58



Spindelstock-Nocken / Becs pour poupée / Headstock beaks		
Nr.	d	L
No	d	L
Nr	d	L
<u>14734</u>	10	62
<u>24556</u>	10	70
<u>14221</u>	12	70
<u>17476</u>	14	74
<u>11446</u>	16	83
<u>20983</u>	20	110



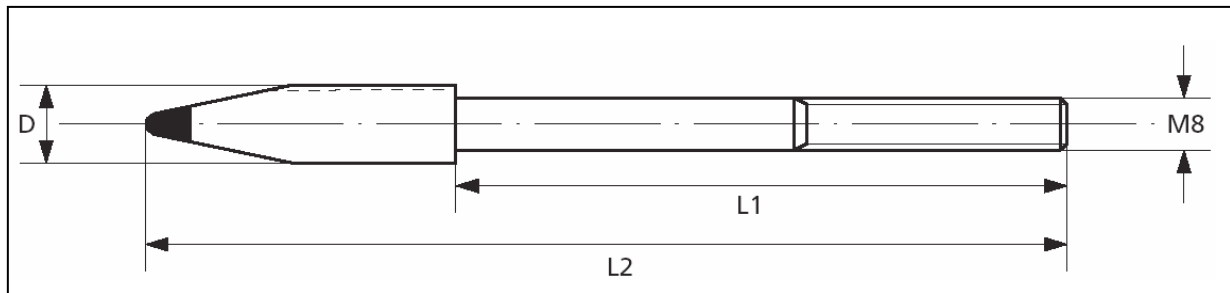
Wippen-Nocken / Becs pour bascule / Rocker beaks		
Nr.	d	D
No	d	D
Nr	d	D
<u>14401</u>	7	9
<u>17952</u>	7	11
<u>11553</u>	10	12



TORNOS Nocken

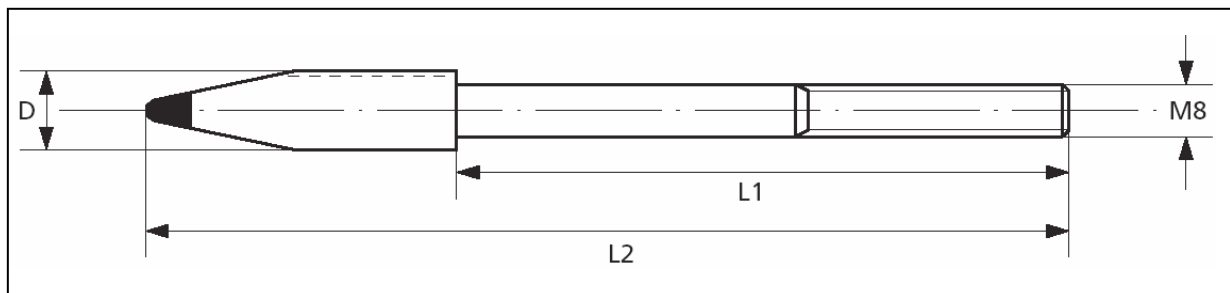
Becs TORNOS

Tornos beaks



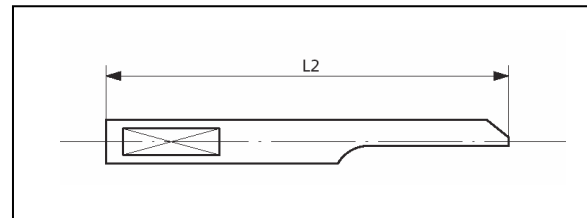
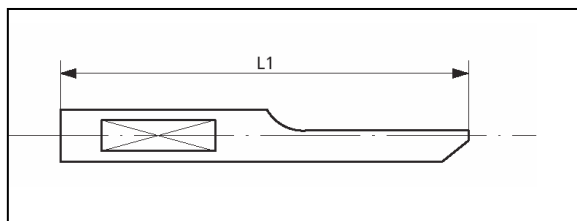
Schaltnocken mit Hartmetall-Plättchen / Becs de numbrage à touche métal dur / Indexing beaks with T. C. pads

Nr.	Apparat	D	L1	L2
No	Appareil	D	L1	L2
Nr	Attachment	D	L1	L2
<u>14118</u>	12-X / 14-R	9	43	78



Schaltnocken mit Hartmetall-Plättchen / Becs de numbrage à touche métal dur / Indexing beaks with T. C. pads

Nr.	Apparat	D	L1	L2
No	Appareil	D	L1	L2
Nr	Attachment	D	L1	L2
<u>10132</u>	13Y / 12-JB	10	47	83



Nocken des Kupplungs-Hebels / Beaks of engaging lever

Nr.	Apparat	D	L1	L2	Material
No	Appareil	D	L1	L2	Matière
Nr	Attachment	D	L1	L2	Material
<u>14682</u>	Taraudeur M-4	5	30		2
<u>14682</u>	Taraudeur M-4	5		33	2